



Constables
SALES & LETTINGS

The Witterings, Neston

£210,000



Constables is delighted to offer for sale this exceptionally well-presented three-bedroom mid-terraced home, located in a popular residential area within easy reach of Neston town centre and its excellent range of amenities, schools and transport links.

The property has been tastefully updated by the current owners and provides well-proportioned, modern accommodation throughout. On the ground floor the entrance hallway leads to a bright and welcoming lounge featuring a stylish media wall with inset gas fire, creating a cosy focal point. There is a separate dining room, ideal for family meals or entertaining, and a contemporary fitted kitchen with a range of wall and base units.

Upstairs, the first floor offers three generously sized bedrooms, each presented in neutral décor, and a modern family bathroom fitted with a white suite.

Outside, the property enjoys gardens to both the front and rear. The rear garden is particularly noteworthy, with a large hard-standing shed fitted with power, offering excellent storage or potential for use as a workshop or hobby space..



Constables

SALES & LETTINGS

- Immaculate Three Bedroom
- Modernized Throughout
- Mid Terraced Property
- Large Workshop With Power
- New Roof
- Gas Central Heating

Porch

Entrance Hall

Lounge

15'1" x 9'10" (4.62m x 3.00m)
15' 2" x 9' 10" (4.62m x 3.00m)

Dining Room

10'11" x 8'11" (3.33m x 2.72m)
10' 11" x 8' 11" (3.33m x 2.72m)

Kitchen

17'7" x 5'8" (5.36m x 1.75m)
17' 7" x 5' 9" (5.36m x 1.75m)

Rear Porch

Door to garden and utility space

Landing

Window to rear aspect.

Bedroom One

14'6" x 8'11" (4.42m x 2.74m)
14' 6" x 9' (4.42m x 2.74m)

Bedroom Two

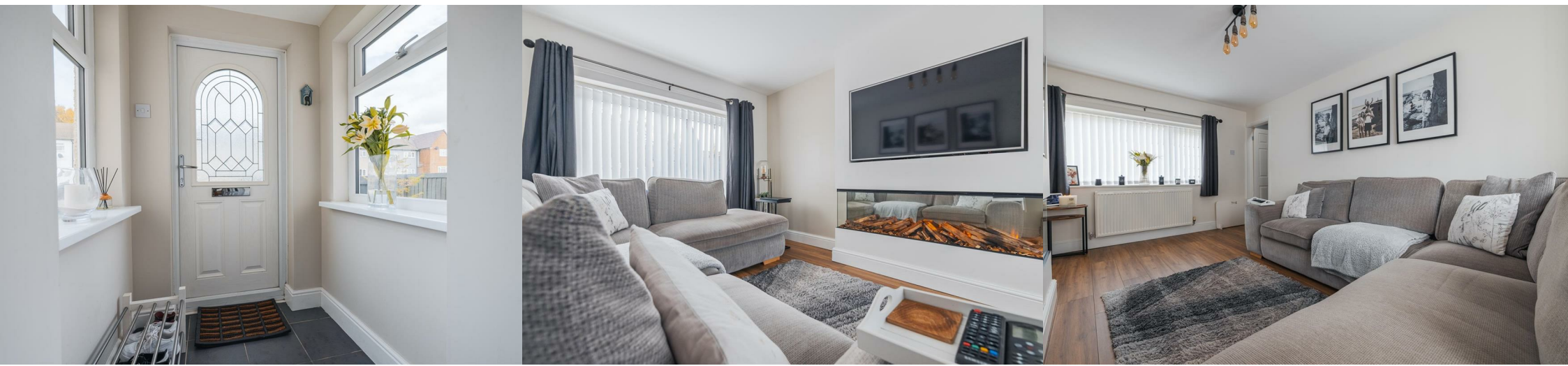
9'10" x 8'11" (3.02m x 2.74m)
9' 11" x 9' (3.02m x 2.74m)

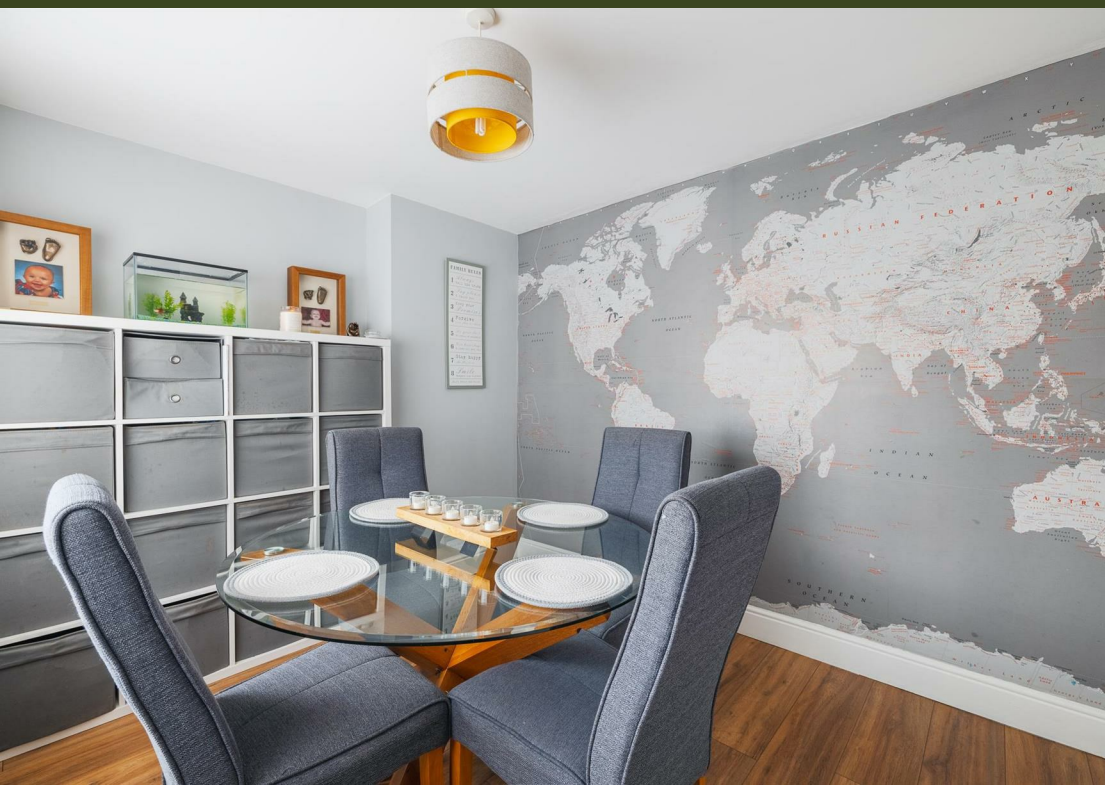
Bedroom Three

11'5" x 5'8" (3.48m x 1.75m)
11' 5" x 5' 9" (3.48m x 1.75m)


Bathroom

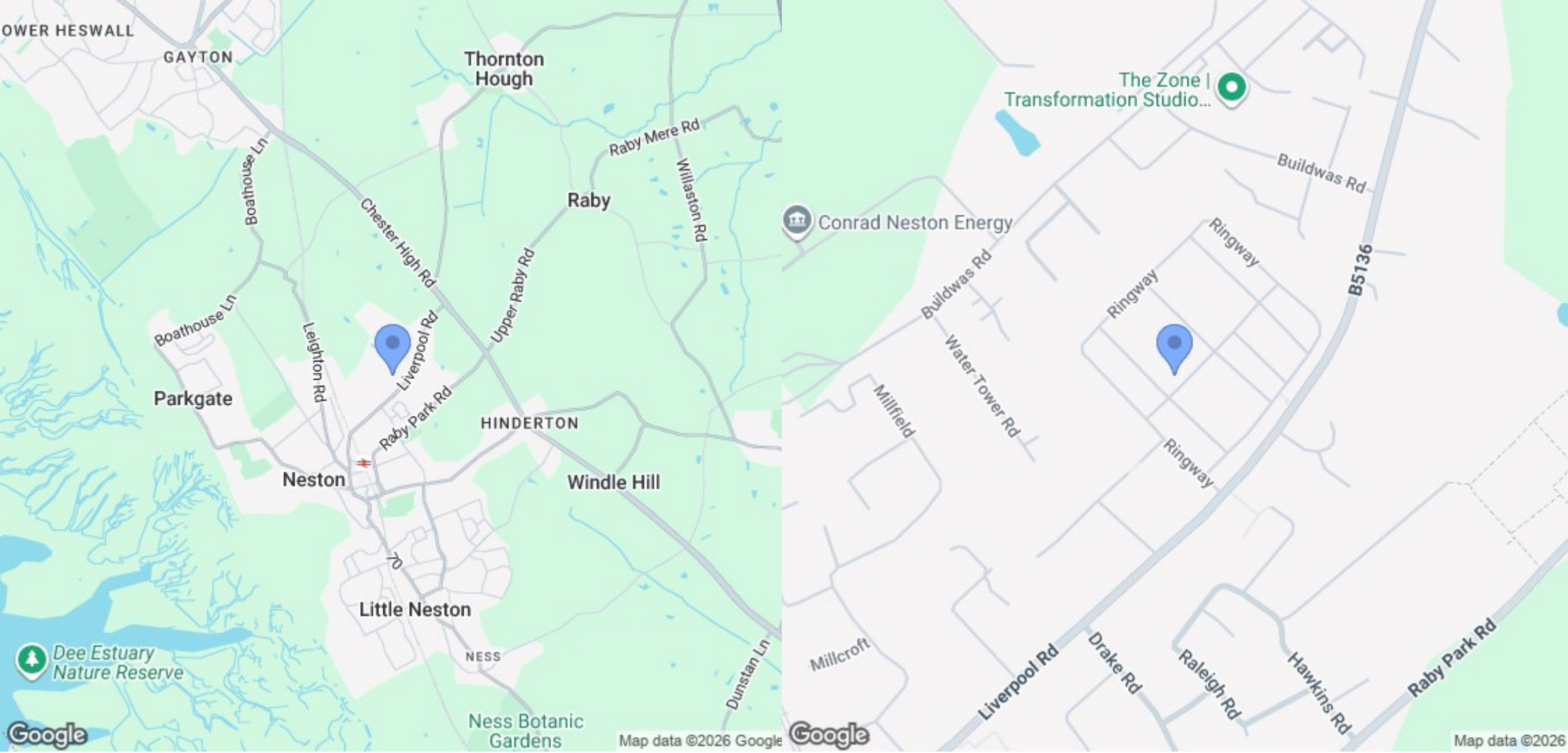
Garden





EPC & Floor Plan

Energy Efficiency Rating		
	Current	Potential
<i>Very energy efficient - lower running costs</i>		
(92 plus) A		
(81-91) B		
(69-80) C		
(55-68) D		
(39-54) E		
(21-38) F		
(1-20) G		
<i>Not energy efficient - higher running costs</i>		
England & Wales	EU Directive 2002/91/EC	



Location Map

Constables

S A L E S & L E T T I N G S

21 High Street, Neston

South Wirral, Neston, Cheshire

www.constablesestateagents.co.uk

info@constablesestateagents.co.uk

0151 353 1333